

## Chromacol Snap Caps.

For Chromacol Snap Ring Vials

### ***Correct Sealing of Autosampler vials***

The material used for sealing the sample within the vial is often overlooked as a part of the analytical process. It can have a significant effect on the overall performance of the system.

- ***Evaporation and Sample Loss***

Without effective seals the loss of volatile components from any mixture will affect the precision of results. Especially important with samples presented for GC analysis

- ***Septa material: -***

The compatibility of any solvent with the seal has to be considered. Although most septa have a protective layer strong solvents can affect all the flexible elastomers.

- ***Cap and Septa combinations***

The seals have to be held in place the type of closure will have some effect on the seal integrity. The Snap Cap has a flexible moulding that locates into the ring around the vial mouth. This locates the seal firmly against the vial opening.

- ***Piercing needles***

The type of needle used to pierce the seal during sampling can physically damage seals and produce unwanted fragments of material that can block connecting tubing and contaminate samples.

- ***Thickness***

Most vial septa thickness is measured in mm. The thicker septa give improved resealability. Most caps will take septa within a narrow range of thickness. Too thick a septa may give problems with cap fit.



### ***Septa Hardness***



- The hardness testing of plastics is most commonly measured by the Shore (Durometer) test. This method measures the resistance of plastics toward indentation and provides an empirical hardness value.
- Shore Hardness, is the preferred method for rubbers/elastomers and is also commonly used for 'softer' plastics such as polyolefins, fluoropolymers, and vinyl.
- This is measured using either the Shore A or Shore D scale. The Shore A scale is used for 'softer' rubbers while the Shore D scale is used for 'harder' ones. Most septa hardness values are stated in Shore A. The exception is that some PTFE and PE hardness is stated as Shore D.
- The results obtained from this test are a useful measure of relative resistance to piercing of various grades of polymers. This gives guidance on the type of needle that will penetrate the seal and whether thinner gauge needles may be used.

### ***Penetration Force***

- The force required to pierce any septum will also be affected by the thickness of the seal and the type of needle. Independent studies have shown that silicone septa are more easily pierced than rubber septa of similar hardness.
- Snap caps exert a fixed force onto the septum and do not hold as firmly as a correctly applied crimp. It is possible that blunt needles may be able to displace the septum into the vial. Where this is known to happen the 11-PSN(B) may be considered. It has an internal bore seal and a single use PE membrane



# Chromacol Product Guide

## Elastomeric materials

The materials used in autosampler seals are selected for their ability to seal the liquid within the vial and their chemical resistance.

**Rubbers** of different types and compositions are the elastomers of choice for most applications. Reference may be made to a number of rubber types.

- Natural Rubber: - Natural cis-polyisoprene. Made partly from natural latex. Has a random structure. Usually red or red-orange in colour. Hardness is dependent on the degree of cross-linking that is formed by the vulcanization process. This introduces sulphur as the cross-linking agent. Harder versions may have higher sulphur content.
- Silicone rubber: - polysiloxanes are formed with silicone chains replacing the carbon chains of other natural and synthetic rubbers. Has high temperature stability so suitable for headspace applications and can be sterilized by autoclaving. It is softer than most natural or synthetic rubbers and has excellent resealing properties.

## Chromacol Seal Types

Seal Material	Shore Hardness	Thickness	Seal Material	Shore Hardness	Thickness
-8RT1 Natural Rubber/PTFE	58	1mm	-TST1 Red PTFE/White Silicone/Red PTFE	57	1mm
-ST1 White Silicone/Red PTFE	57	1mm	-ST1X White Silicone/Red PTFE Pre-slit	57	1mm
-ST101 Blue Silicone/PTFE	30	1mm			

## The importance of PTFE

- PTFE layers protect the majority of rubber seals as the PTFE acts as a chemically resistant barrier against chemical attack.
- Making a sandwich of silicone rubber between two layers of PTFE produces a seal extremely resistant to "coring" from open ended piercing needles or probes.
- PTFE seals give excellent resistance to chemical attack but do not reseal after piercing. This makes them unsuitable for applications requiring multiple standard injections.

## Non-elastomeric seals.

Polypropylene and PTFE are used to make a range of single use snap caps. These do not reseal and will lose solvent if left after injection.

Seal Material	Shore Hardness	Thickness	Seal Material	Shore Hardness	Thickness
-T02 PTFE	Shore D	0.02mm	-PE Polyethylene	Shore D	0.025mm

## Technical Challenges

### Coring:-

This is usually caused by the action of the autosampler-piercing needle. As the needle descends it should normally cleanly cut the top of the elastomer, force its way through the seal and exit through the protective PTFE layer. It then enters the sample before starting to extract the liquid injection volume.

- The needle does not enter correctly and slices the elastomer.
- The slice may either enter the needle orifice or be pushed down into the sample
- The result is a blockage of the sample path leading to under delivery of sample.
- If fragments reach the sample the analysis will show a contamination peak.

Some auto samplers are more prone to this phenomenon than others. Conical finish needles are more likely to core. Side entry needles are less prone to the problem. Softer seals are more likely to be affected.



Needle Types



# Chromacol Product Guide

## Solutions

There are a number of ways to reduce the incidence of coring.

- Make sure that the syringe needle is of the correct type and is not damaged. Even a slight nick on the tip may start the process.
- Use sandwich septa with two layers of PTFE enclosing the softer elastomer.
- Consider a pre-slit septa if the problem persists.

## MS Detectors: -

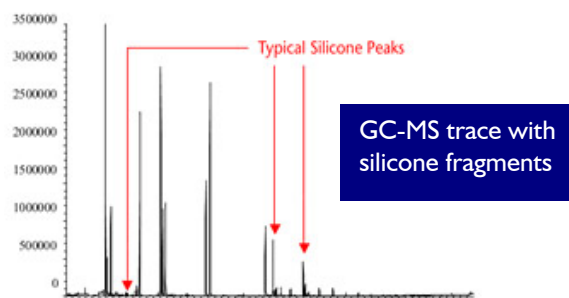
The advantage of these detectors is the ability to show the presence of all the mixture components in the Total Ion mode. The disadvantage is that it can also show the presence of unwanted contaminants introduced from sources such as the injection solvent, the vial septa and the connecting tubing.

The ability to show these components previously missed by techniques such as UV-Vis spectroscopy and FID can interfere with analyte peaks and reduce result confidence.

## Solutions

There are a number of ways to reduce this contamination threat

- Use a high-grade silicone seal with a clean PTFE protective face.
- If septa have been in store consider baking the caps at 150C in a drying oven to remove volatile contaminants.



## Vacuum generation: -

As the aim is to produce a sealed vessel that will not leak it may be a surprise to realize that too good a seal can reduce the precision of the injector. This perverse effect is due to the formation of a slight vacuum as the sample is withdrawn through the injection or piercing needle. This vacuum can prevent all the required volume entering the sampling system

## Solutions

There are a number of ways to remove this effect

- Make sure that the vial is not overfilled with sample
- Do not take more than 50uL of sample for each injection.
- Use a pre-slit seal that will allow the pressure to equalize more rapidly.

## Storage: -

It may be required to keep samples stored until the analytical process is complete. If the sample is to be retained for a number of days or perhaps weeks it is necessary to ensure that the solvents used will not escape from the sealed vial or cause damage to the seal material. Snap Caps are not generally recommended for long term storage but for short term use the 11-PSN(B) is an inexpensive option.

## GC Injection: -Problem Solvents.

The use of snap caps is not generally recommended for use with the volatile solvents routinely used in GC injection. Pentane has such a low boiling point that even slight warming will lead to volatile loss. When used in GC a secure rubber/PTFE seal is required and the pressure maintained by the snap closure is not always sufficient.

The chlorinated solvents such as Dichloromethane and Chloroform are capable of damaging the plastic caps themselves.

## Summary Recommendations

Chromacol Seal Type	Method Compatibility
-ST1	General HPLC and GC where silicone is preferred.
-8RT1	General HPLC and GC where rubber is preferred.
-ST101	LC-MS and GC-MS recommended. Shimadzu LC and GC compatible.
-ST1X	Pre-slit septa for blunt needle penetration and anti-vacuum operation for PE and Merck-Hitachi HPLC systems.
-TST1	Anti-coring septa. Gilson preferred.



# Chromacol Product Guide

## Snap Ring Vials

Part	Description	Part	Description
2-RV	2mL SNAP CAP™ Vial with Write on Patch - Clear	03-FIRV	.3mL Snap Cap Fixed Insert Vial with Write on Patch - Clear
2-RV(A)	2mL Snap Cap Vial with Write on Patch - Amber	03-FIRV(A)	.3mL Snap Cap Fixed Insert Vial with Write on Patch - Amber
1.5-HRRV	1.5mL Snap Cap Vial - Clear - High Recovery **Available in Packs of 100**	1.5-HRRV(S)	1.5mL Snap Cap Vial - Clear Silanized- High Recovery **Available in Packs of 100**

## Snap Caps



Part	Description
11-PSN-8RT1	11mm PE Snap Cap Pre-fitted with a Red Rubber/PTFE Seal - Black
11-PSN-ST1	11mm PE Snap Cap Pre-fitted with a Silicone/PTFE Seal - Black
11-PSN(B)	11mm PE Snap Cap with an Integral PE Seal - Blue
11-PSN(B)-T02	11mm PE Snap Cap Pre-fitted with a PTFE Seal - Blue
11-PSN(B)-TST1	11mm PE Snap Cap Pre-fitted with a PTFE/Silicone/PTFE Seal - Blue
11-PSN(B)-8RT1	11mm PE Snap Cap Pre-fitted with a Red Rubber/PTFE Seal - Blue
11-PSN(B)-ST1	11mm PE Snap Cap Pre-fitted with a Silicone/PTFE Seal - Blue
11-PSN(B)-ST101	11mm PE Snap Cap Pre-fitted with a Blue Silicone/PTFE Seal - Blue
11-PSN(B)-ST1X	Pre-Slit PTFE/Silicone Seal 11mm Snap Cap - Blue
11-PSN(G)-ST1X	11mm PE-Snap Cap Pre-Slit PTFE/Silicone Seal - Green
11-PSN(R)-T02	11mm PE Snap Cap Pre-fitted with a PTFE Seal - Red
11-PSN(Y)-8RT1	11mm PE Snap Cap Pre-fitted with a Red Rubber/PTFE Seal -Yellow
11-PSN(Y)-ST1	11mm PE Snap Cap Pre-fitted with a Silicone/PTFE Seal - Yellow

Chromacol Ltd  
3 Mundells Industrial Centre  
Welwyn Garden City  
Herts AL7 1EW  
United Kingdom

Phone +44 (0) 1707 394949  
enquiries@chromacol.com

Fax +44 (0) 1707 391311  
www.chromacol.com